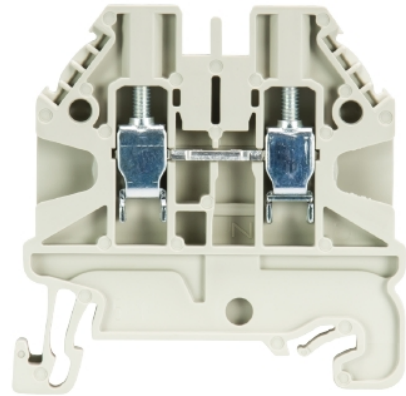


## Data sheet

Commercial Art.No.: 58.503.0055.0

feed-through terminal WT 2,5

Feed-through terminal with Screw connection for mounting on TS 35, nominal cross section: 2.5 mm<sup>2</sup>, width: 5 mm, color: grey



Commercial Art.No.	58.503.0055.0
EAN	4049088154027
Order Unit	100

certificates / approvals



SEV-Ex



## Technical data

### general

nominal cross section	2.5 mm <sup>2</sup>
color	grey
number of levels	1
number of clamp positions per level	2
width/grid dimension	5 mm
insulating housing	PA666
flammability class of insulation material acc. with UL94	V0
explosion-tested version "Ex e"	yes
mounting method	DIN rail (top hat rail)
terminal blocks for electrical installations	yes

### technical data

rated current	24 A
rated voltage	1000 V
rated impulse voltage	8 kV
pollution degree	3
closing plate required	yes
type of insulation material	thermoplastic
length	48 mm
width	5 mm
height	48 mm

### connection data

connection type 1	screw connection
connection type 2	screw connection
minimum cross section solid	0.14 mm <sup>2</sup>
maximum cross section solid	4 mm <sup>2</sup>
minimum cross section fine stranded	0.14 mm <sup>2</sup>
maximum cross section fine stranded	4 mm <sup>2</sup>
minumum conductor cross section (flex., stranded) with cable end sleeve	0.5 mm <sup>2</sup>
maximum conductor cross section (flex., stranded) with cable end sleeve	2.5 mm <sup>2</sup>
wire strip length	9 mm
torque conductor mounting	0.4 Nm

#### technical data UL/CSA

cross section UL	26-12 AWG
voltage UL	600 V
current factory wiring	20 A
current field wiring	20 A
cross section CSA	26-12 AWG
voltage CSA	600 V
current CSA	20 A

#### technical data IECEx

cross section fine-stranded	0,14 - 4
connectable conductor cross section solid	0,14 - 4

#### technical data ATEX

cross section fine-stranded	0,14 - 4
connectable conductor cross section solid	0,14 - 4

#### classification

ECLASS 11	
ECLASS 8.1	27141120
ETIM 9.0	EC000897
ETIM 8.0	EC000897
ETIM 7.0	EC000897
ETIM 6.0	EC000897
ETIM 5.0	EC000897
ETIM 4.0	EC000897
ETIM 3.0	EC000897

#### product compliance

ROHS conformity status	compliant
REACH-SVHC conformity status	compliant

## Accessories

Commercial Art.No.:	Article-type description:	Description:
---------------------	---------------------------	--------------

07.313.2555.0	end plate AP WT 2,5-10 GR	End plate for DIN rail terminal blocks type WT 2,5..., color: grey
07.313.2655.0	partition TW WT 2,5-10 GR	Partition for DIN rail terminal blocks type WT 2,5, WT 4, WT 6 and WT 10..., color: grey
Z7.280.6227.0	jumper bar IVBWKF 2,5- 2	Cross connector, insulated for DIN rail terminal blocks type WKF..., 2 - pole
Z7.280.6327.0	jumper bar IVBWKF 2,5- 3	Cross connector, insulated for DIN rail terminal blocks type WKF..., 3 - pole
Z7.280.6427.0	jumper bar IVBWKF 2,5- 4	Cross connector, insulated for DIN rail terminal blocks type WKF..., 4 - pole
Z7.280.6527.0	jumper bar IVBWKF 2,5- 5	Cross connector, insulated for DIN rail terminal blocks type WKF..., 5 - pole
Z7.280.6627.0	jumper bar IVBWKF 2,5- 6	Cross connector, insulated for DIN rail terminal blocks type WKF..., 6 - pole
Z7.280.6727.0	jumper bar IVBWKF 2,5- 7	Cross connector, insulated for DIN rail terminal blocks type WKF..., 7 - pole
Z7.280.6827.0	jumper bar IVBWKF 2,5- 8	Cross connector, insulated for DIN rail terminal blocks type WKF..., 8 - pole
Z7.280.6927.0	jumper bar IVBWKF 2,5- 9	Cross connector, insulated for DIN rail terminal blocks type WKF..., 9 - pole
Z7.280.7027.0	jumper bar IVBWKF 2,5- 10	Cross connector, insulated for DIN rail terminal blocks type WKF..., 10 - pole
Z7.280.7127.0	jumper bar IVBWKF 2,5- 11	Cross connector, insulated for DIN rail terminal blocks type WKF..., 11 - pole
Z7.280.7227.0	jumper bar IVBWKF 2,5- 12	Cross connector, insulated for DIN rail terminal blocks type WKF..., 12 - pole
Z7.280.8027.0	jumper bar IVBWKF 2,5- 20	Cross connector, insulated for DIN rail terminal blocks type WKF..., 20 - pole
04.242.5053.0	marking tag strips 9705 A / 5 / 10	Marking tag strips for DIN rail terminal blocks type 9700 A / 5..., 10 tags per strip, color: white, unmarked, markable with Wieplot plotter-system
98.300.1000.0	mounting rail TS 35x7,5 PERF 15mm - l:2000mm	Mounting rail TS 35, slotted, size 7,5 mm, length 2 m, material steel. galv. zinc-plated and passivated

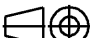




Hutschiene EN 60715-35x15  
mounting rail EN 60715-35x15



Die Weitergabe sowie die Vervielfältigung dieses Dokuments, die Verbreitung und Mitteilung seines Inhalts sind verboten, wenn es ausdrücklich so gekennzeichnet ist.  
The reproduction, distribution and utilization of this document as well as the communication of its contents to others without express authorizations prohibited.

Weitere Daten siehe KATALOG oder eKatalog additional data see CATALOG or eCATALOG	<a href="http://www.wieland-electric.com">www.wieland-electric.com</a> <a href="http://eshop.wieland-electric.com">eshop.wieland-electric.com</a>
--	--

Tolerierung Size ISO 14405 ☺ / Tolerance system Size ISO 14405 ☺ (This ISO-standard describes the envelope principle. According to the envelope principle the deviations of form and parallelism are limited by the size tolerances).					ja/yes ☑ Stoffverbots- und Deklarationsliste nach WN 5020.010 ist einzuhalten. Conformity with Wieland document WN 5020.010 e (list of prohibited declarable hazardous substances) to be declared!					
Freitoleranz nach General tolerance			CAD - Zeichnung, keine manuellen Änderungen CAD - drawing, no manual modifications allowed			1. Verwendung: First Use:		Blatt: 1 von Sheet: 1 of		
	/		Werkstoff / Material			Tag/Date	Name	T	Zeichnung Nr. / Drawing No.  58.503.0055.0 01K	Ind
	/				gezeichnet drawn	18.01.2013	Eller			
	/				geprüft checked					
	/				Normgepr. Stand. check					
	/	Maßstab / Scale  2:1			Maße in mm / Dimensions are in mm					
	/	Vol.	mm <sup>3</sup>	Dfl./Srf.	mm <sup>2</sup>	Ersatz für / Replacement for:				
	/					Type	Benennung/Title			
a	22.03.2017 /				WT 2,5		DURCHGANGSKLEMME  feed through terminal			
Index	Datum / Blatt Date / Sheet									
Änderung / Revision										
		www.wieland-electric.com								